



UPort 1200/1400/1600 USB-to-Serial Converter Quick Installation Guide

Fourth Edition, June 2008

1. Overview

UPort is the brand name of Moxa's USB-to-serial product line, which provides a wide range of easy-to-use solutions for adding Windows COM ports and Linux tty ports through a PC's USB port. Important features of UPort products include support for hi-speed (480 Mbps) USB 2.0, Moxa CPU, Moxa UART, and the ability to assign COM port numbers. These features make the UPort products easy to use and maintain.

The UPort 1200/1400/1600 line of USB-to-serial Converters includes the following models:

- UPort 1250 2-port RS-232/422/485 USB-to-serial Converter
- UPort 1250I 2-port RS-232/422/485 USB-to-serial Converter w/ isolation protection
- UPort 1410 4-port RS-232 USB-to-serial Converter
- UPort 1450 4-port RS-232/422/485 USB-to-serial Converter w/ isolation protection
- UPort 1450I 4-port RS-232/422/485 USB-to-serial Converter w/ isolation protection
- UPort 1610-8 8-port RS-232 USB-to-serial Converter
- UPort 1650-8 8-port RS-232/422/485 USB-to-serial Converter
- UPort 1610-16 16-port RS-232 USB-to-serial Converter
- UPort 1650-16 16-port RS-232/422/485 USB-to-serial Converter

Before connecting UPort USB-to-serial converters to your computer's USB port, we recommend installing the UPort driver first. To do this, follow the installation procedure described in Section 3.

The installation procedure described in Section 3 was done on a PC running Windows XP. Windows 2000, 2003, and Vista (32-bit and 64-bit) drivers are installed in the same. UPort converters can be connected to any upstream type A USB port that is on the PC host or on an upstream hub. UPort converters are hot pluggable, and therefore there is no need to power down your computer prior to installation.

P/N: 1802014000013

After installing the driver, connect the UPort to an upstream host or hub. The Found New Hardware wizard will locate the appropriate drivers automatically. Once the drivers are found, various windows will pop up as the UPort's serial port is being installed. When the Found New Hardware Wizard finishes installing the UPort, use the operating system's **Device Manager** to check and/or modify the port settings. The new COM port will be listed under **Ports (COM & LPT)**.

2. Package Checklist

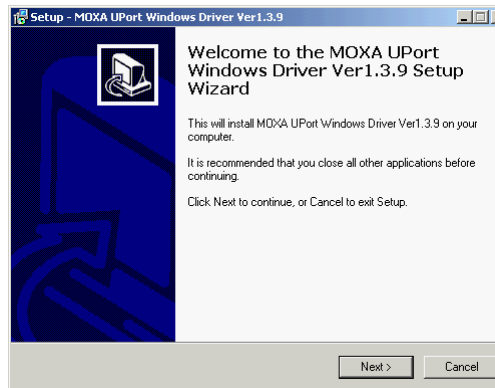
Before installing the UPort, verify that the package contains the following items:

- UPort 1200/1400/1600 USB-to-serial Converter
- 1 USB cable
- Documentation and Software CD-ROM
- UPort 1200/1400/1600 Quick Installation Guide
- Power adaptor (for UPort 1250I/1450I/1600-8) or power cord (for UPort 1600-16)

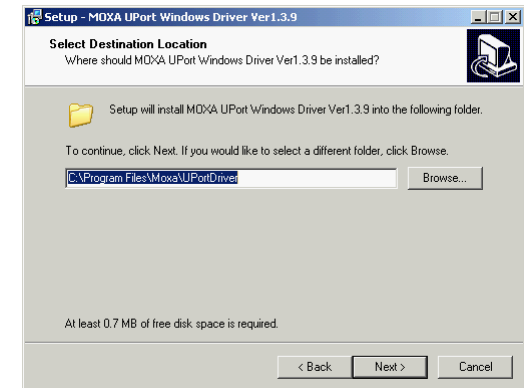
Notify your sales representative if any of the above items are missing or damaged.

3. Installing the UPort 1200/1400/1600 Driver

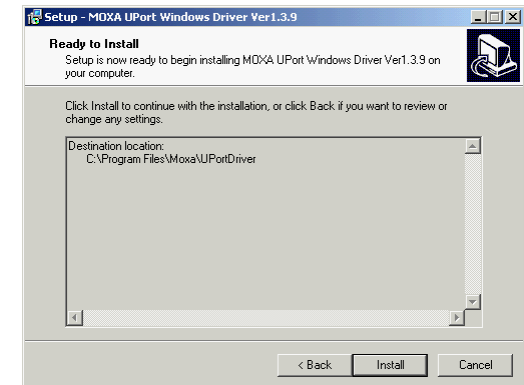
1. Run the Setup program located on the UPort 1200/1400/1600 Document and Software CD-ROM. Click Next to start installing the driver.



2. Click on **Next** to install the driver in the indicated folder.



3. Click on **Install** to proceed with installation.



4. The next window that opens cautions you that although this software has not passed Windows logo testing, this driver has already been tested and shown that it can support the Windows OS. Click **Continue Anyway** to proceed. Then, click **Finish** to complete the driver installation.

4. Installing the UPort 1200/1400/1600 Hardware

WARNING

1. This unit is not meant to be sold to consumers. It will only be shipped to manufacturers or factories.
2. The DC source should come from a class external adaptor or a 12 to 48 VDC Safety Extra-Low Voltage (SELV) limited power source (LPS) using a transfer device.
3. This unit should be installed or set up by a qualified service person.

1. Refer to the table below to see if external power is needed for your UPort. If applicable, connect the UPort to an external power source.

	UPort 1250	UPort 1250I	UPort 1400	UPort 1600-8	UPort 1600-16
Bus Power	---	---	√	---	---
External Power (adaptor)	√	√	√	√	---
External Power (cord)	---	---	---	---	√

2. Connect the UPort to the PC using the USB cable.
3. After powering on your PC, Windows 2000/XP/2003 will automatically detect the UPort.
4. Click **Next** to start the installation.



5. Select **Install the software automatically (Recommended)**.



6. The next window that opens cautions you that although this software has not passed Windows logo testing, this driver has already been tested and shown that it can support Windows OS. Click Continue Anyway to proceed. Then, click Finish to complete the driver installation.



7. Repeat steps 4 to 6 until all COM ports are installed.

5. Installing the Linux Kernel 2.6.x Driver

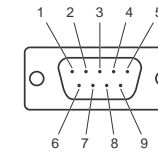
First obtain the Linux driver file **driv_linux2.6_uport_v1.0_build_xxx.tgz** from the Document and Software CD, or from Moxa's website at <http://www.moxa.com>. Save the driver file to a specific directory, such as **/moxa**, and then execute the commands listed below:

```
# mkdir moxa
# cd /moxa
# cp /mnt/cdrom/<driver
dir>/driv_linux2.6_uport_v1.0_build_xxx.tgz .
# tar xvfz driv_linux2.6_uport_v1.0_build_xxx.tgz
# make
# make install
# modprobe mxuport
# ls /dev/ttyMXUSB*
```

6. Serial Port Pin Assignments

The serial ports on the UPort 1200/1400/1600 have DB9 male connectors. Refer to the following table for the RS-232 and RS-422/485 pin assignments.

Male DB9



Pin	RS-232	RS-422/4-wire RS-485	2-wire RS-485
1	DCD	TxD-(A)	---
2	RxD	TxD+(B)	---
3	TxD	RxD+(B)	Data+(B)
4	DTR	RxD-(A)	Data-(A)
5	GND	GND	GND
6	DSR	---	---
7	RTS	---	---
8	CTS	---	---

Power Input Specifications

UPort 1250:	5 VDC (bus power), 360 mA
UPort 1250I:	12 to 48 VDC, 200 mA (max. in 12 VDC)
UPort 1410/1450:	12 to 48 VDC (external) or 5 VDC (bus power), 260 mA (max. in 12 VDC)
UPort 1450I:	12 to 48 VDC, 360 mA (max. in 12 VDC)
UPort 1600-8:	12 to 48 VDC, 580 mA (max. in 12 VDC)
UPort 1600-16:	100 to 240 VAC, 220 mA (max. in 100 VAC)

MOXA®

Click here for online support:
www.moxa.com/support

The Americas: +1-714-528-6777 (toll-free: 1-888-669-2872)
Europe: +49-89-3 70 03 99-0
Asia-Pacific: +886-2-8919-1230
China: +86-21-5258-9955 (toll-free: 800-820-5036)

© 2008 Moxa Inc., all rights reserved.
Reproduction without permission is prohibited.